

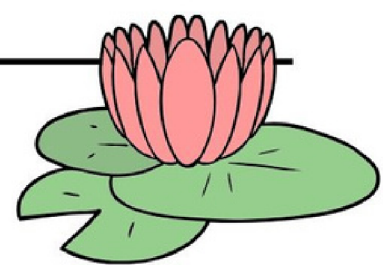


A series of horizontal red lines providing a writing area for text.





A series of 15 horizontal lines for writing, spaced evenly down the page.





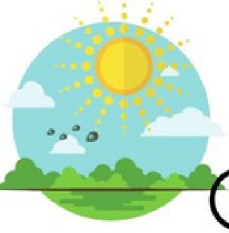
A series of 18 horizontal black lines, evenly spaced, providing a writing area for the page.





A series of 15 horizontal black lines spaced evenly down the page, providing a writing area.





Handwriting practice lines consisting of 15 horizontal black lines.

